



18 Gervase Square

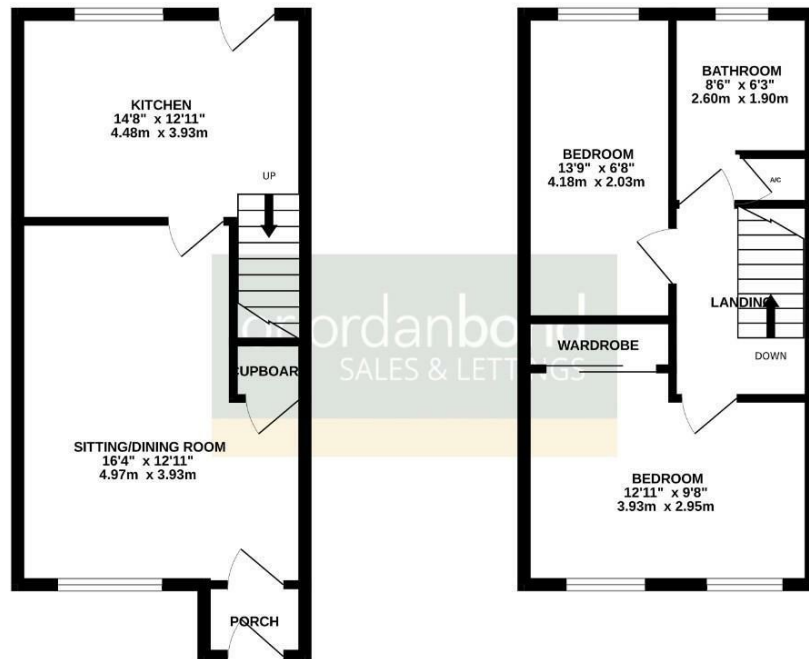
Great Billing, Northampton

oriordanbond
SALES & LETTINGS



GROUND FLOOR

1ST FLOOR



TOTAL FLOOR AREA - 675sq.ft. (62.7 sq.m.) approx.

While every attempt has been made to ensure the accuracy of the floorplan contained here, measurements of doors, windows, rooms and any other items are approximate and no responsibility is taken for any error, omission or mis-statement. This plan is for illustrative purposes only and should be used as such by any prospective purchaser. The services, systems and appliances shown have not been tested and no guarantee as to their operability or efficiency can be given.
Made with Metaguide 02/23

18 Gervase Square

Great Billing

NN3 9NR

OFFERS OVER

£220,000

A well presented terrace property situated in the ever popular Great Billing. The property is located near many local schools and provides good access to Northampton Academy, Weston Favell Shopping Centre and the A45.

Accommodation comprises entrance porch, sitting/dining room, re-fitted kitchen with stairs to first floor landing, two bedrooms (both with fitted wardrobes) and a re-fitted family bathroom. Outside is low maintenance frontage, an enclosed rear garden with gated side access and lawn, patio and decked areas and a single garage with parking in front accessed via the rear of the property. Further benefits include gas radiator and uPVC double glazing. (B/675/S)

Additional information

- Council Tax Band: A
- Energy Efficiency Rating: C

Viewing

Viewing strictly by appointment – details below

Disclaimer

O'Riordan Bond Estate Agents Limited has not tested apparatus, equipment, fittings or services and so cannot verify they are in working order. The buyer is advised to obtain verification from their solicitor or surveyor.

O'Riordan Bond Weston Favell Sales

01604 784007

westonfavell@oriordanbond.co.uk

